

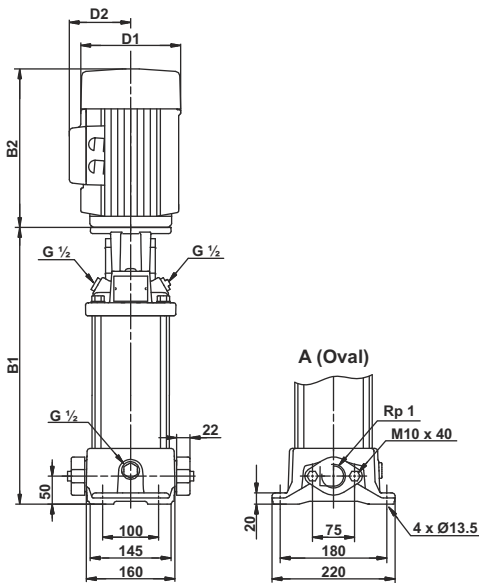
Technical Data

Vertical multistage centrifugal pumps

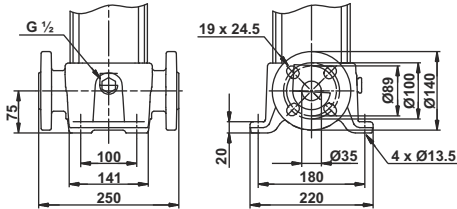
LCR 2

Performance Chart

| Pump Type | H.P. | kW | Q l/min m ³ /h | n = 2900 rpm | | | | |
|-----------|------|------|---------------------------------|--------------|------|------|------|------|
| | | | | 16.7 | 26.7 | 38.3 | 50.0 | 58.3 |
| | | | | 1.0 | 1.6 | 2.3 | 3.0 | 3.5 |
| LCR 2/2 | 0.50 | 0.37 | H mts. | 18 | 17 | 15 | 12 | 9 |
| LCR 2/3 | 0.50 | 0.37 | | 27 | 25 | 22 | 17 | 12 |
| LCR 2/4 | 0.75 | 0.55 | | 37 | 34 | 29 | 23 | 18 |
| LCR 2/5 | 0.75 | 0.55 | | 45 | 42 | 36 | 28 | 21 |
| LCR 2/6 | 1.00 | 0.75 | | 55 | 50 | 43 | 34 | 25 |
| LCR 2/7 | 1.00 | 0.75 | | 63 | 58 | 49 | 39 | 29 |
| LCR 2/9 | 1.50 | 1.10 | | 81 | 74 | 64 | 51 | 39 |
| LCR 2/11 | 1.50 | 1.10 | | 98 | 89 | 76 | 60 | 45 |
| LCR 2/13 | 2.00 | 1.50 | | 117 | 107 | 93 | 74 | 56 |
| LCR 2/15 | 2.00 | 1.50 | | 134 | 122 | 105 | 83 | 62 |
| LCR 2/18 | 3.00 | 2.20 | | 163 | 150 | 130 | 104 | 79 |
| LCR 2/22 | 3.00 | 2.20 | | 197 | 180 | 155 | 123 | 93 |
| LCR 2/26 | 4.00 | 3.00 | | 236 | 217 | 187 | 149 | 113 |



FGJ (DIN-ANSI-JIS)
PN 25 / DN 25/32



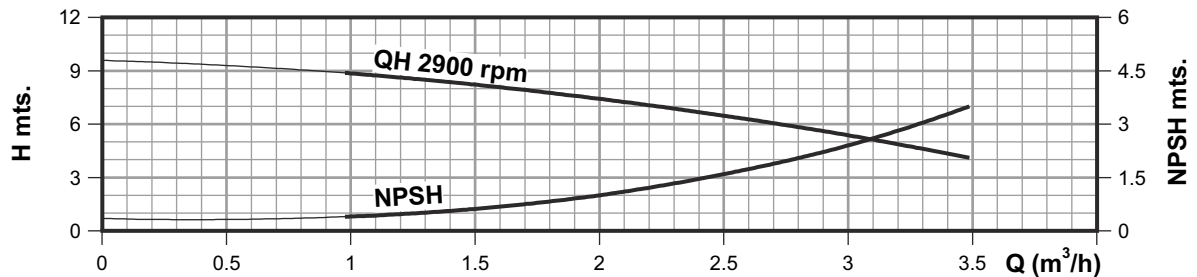
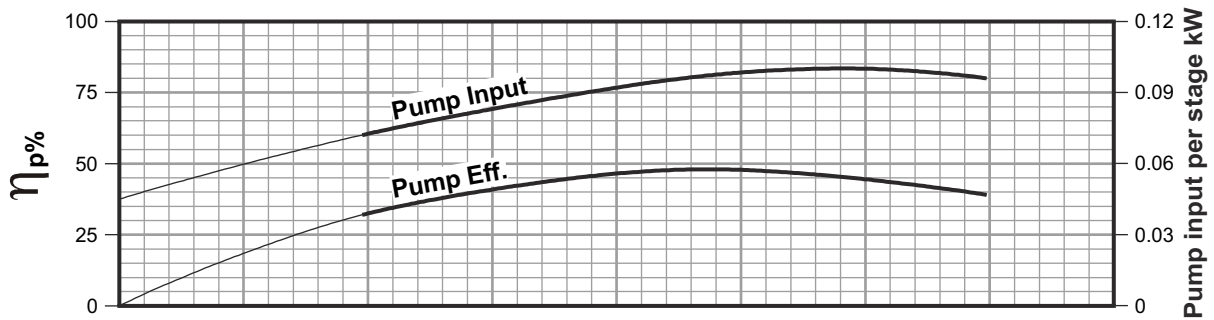
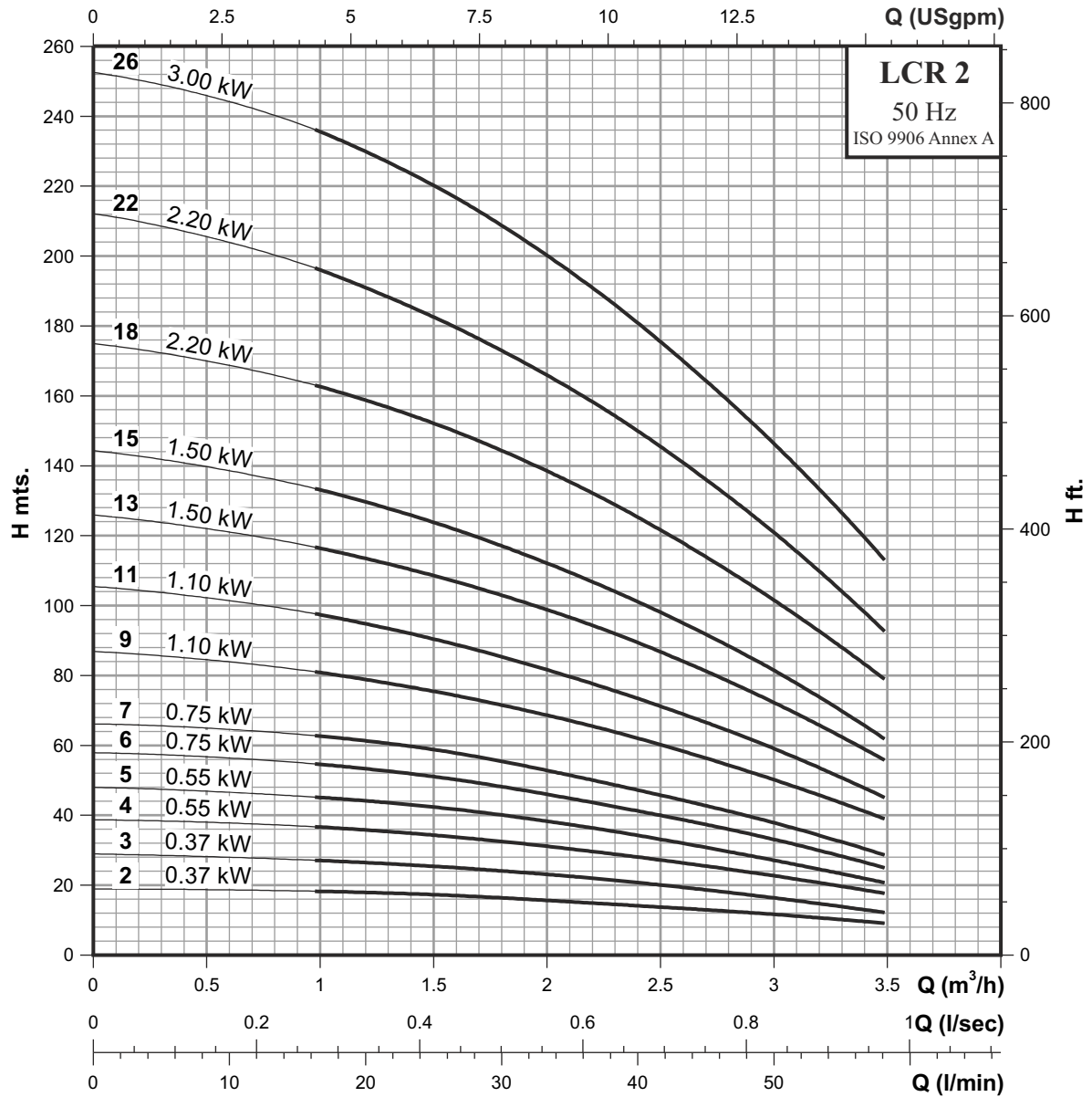
Dimensions & Weights of LCR Pump

| Pump type | Dimensions [mm] | | | | | | Net weight [kg] | | Gross weight [kg] | | Gross volume [m ³] |
|-----------|-----------------|-------|------------|-------|-----|-----|-----------------|------------|-------------------|------------|--------------------------------|
| | Oval flange | | DIN flange | | D1 | D2 | Oval flange | DIN flange | Oval flange | DIN flange | |
| | B1 | B1+B2 | B1 | B1+B2 | | | | | | | |
| LCR 2/2 | 236 | 449 | 261 | 474 | 143 | 106 | 18.0 | 23.0 | 28.0 | 33.0 | 0.1030 |
| LCR 2/3 | 254 | 467 | 279 | 492 | 143 | 106 | 18.0 | 23.0 | 28.0 | 33.0 | 0.1030 |
| LCR 2/4 | 272 | 485 | 297 | 510 | 143 | 106 | 19.0 | 23.0 | 29.0 | 33.0 | 0.1030 |
| LCR 2/5 | 290 | 503 | 315 | 528 | 143 | 106 | 19.0 | 24.0 | 29.0 | 34.0 | 0.1030 |
| LCR 2/6 | 308 | 572 | 333 | 597 | 160 | 113 | 23.0 | 26.0 | 37.0 | 40.0 | 0.1428 |
| LCR 2/7 | 326 | 590 | 351 | 615 | 160 | 113 | 23.0 | 27.0 | 37.0 | 41.0 | 0.1428 |
| LCR 2/9 | 368 | 632 | 393 | 657 | 160 | 113 | 23.0 | 28.0 | 37.0 | 42.0 | 0.1428 |
| LCR 2/11 | 404 | 668 | 429 | 693 | 160 | 113 | 26.0 | 31.0 | 40.0 | 45.0 | 0.1428 |
| LCR 2/13 | 440 | 718 | 465 | 743 | 165 | 130 | 27.0 | 31.0 | 41.0 | 45.0 | 0.1428 |
| LCR 2/15 | 476 | 754 | 501 | 779 | 165 | 130 | 36.0 | 40.0 | 50.0 | 54.0 | 0.1428 |
| LCR 2/18 | 546 | 824 | 571 | 849 | 165 | 130 | 37.0 | 41.0 | 55.0 | 59.0 | 0.1825 |
| LCR 2/22 | 618 | 896 | 643 | 921 | 165 | 130 | 39.0 | 43.0 | 57.0 | 61.0 | 0.1825 |
| LCR 2/26 | 690 | 994 | 715 | 1019 | 194 | 140 | 45.0 | 49.0 | 74.0 | 78.0 | 0.2650 |

Performance Curves

Vertical multistage centrifugal pumps

LCR 2

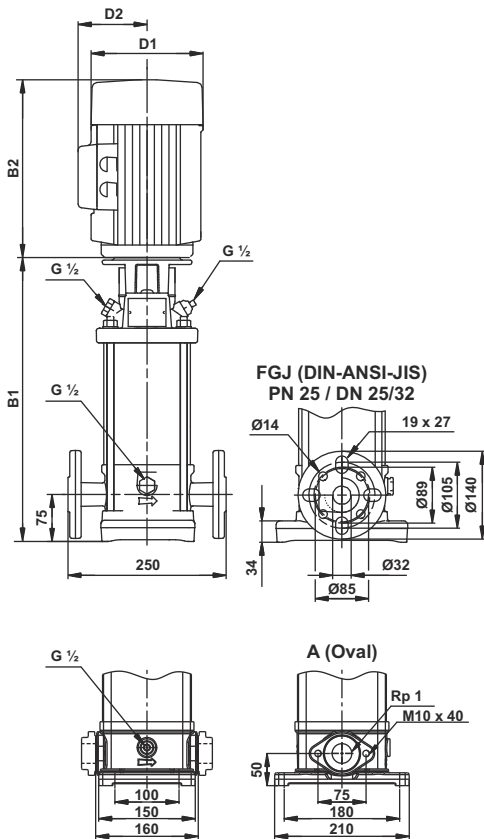


Technical Data

Vertical multistage centrifugal pumps

LCRI, LCRN 2

Performance Chart



| Pump Type | H.P. | kW | Q l/min m ³ /h | n = 2900 rpm | | | | |
|-----------------|------|------|---------------------------------|--------------|------|------|------|------|
| | | | | 16.7 | 26.7 | 38.3 | 50.0 | 58.3 |
| | | | | 1.0 | 1.6 | 2.3 | 3.0 | 3.5 |
| LCRI, LCRN 2/2 | 0.50 | 0.37 | H mts. | 18 | 17 | 15 | 12 | 9 |
| LCRI, LCRN 2/3 | 0.50 | 0.37 | | 27 | 25 | 22 | 17 | 12 |
| LCRI, LCRN 2/4 | 0.75 | 0.55 | | 37 | 34 | 29 | 23 | 18 |
| LCRI, LCRN 2/5 | 0.75 | 0.55 | | 45 | 42 | 36 | 28 | 21 |
| LCRI, LCRN 2/6 | 1.00 | 0.75 | | 55 | 50 | 43 | 34 | 25 |
| LCRI, LCRN 2/7 | 1.00 | 0.75 | | 63 | 58 | 49 | 39 | 29 |
| LCRI, LCRN 2/9 | 1.50 | 1.10 | | 81 | 74 | 64 | 51 | 39 |
| LCRI, LCRN 2/11 | 1.50 | 1.10 | | 98 | 89 | 76 | 60 | 45 |
| LCRI, LCRN 2/13 | 2.00 | 1.50 | | 117 | 107 | 93 | 74 | 56 |
| LCRI, LCRN 2/15 | 2.00 | 1.50 | | 134 | 122 | 105 | 83 | 62 |
| LCRI, LCRN 2/18 | 3.00 | 2.20 | | 163 | 150 | 130 | 104 | 79 |
| LCRI, LCRN 2/22 | 3.00 | 2.20 | | 197 | 180 | 155 | 123 | 93 |
| LCRI, LCRN 2/26 | 4.00 | 3.00 | | 236 | 217 | 187 | 149 | 113 |

Dimensions & Weights of LCRI, LCRN Pump

| Pump type | Dimensions [mm] | | | | | Net weight [kg] | Gross weight [kg] | Gross volume [m ³] | |
|-----------------|-----------------|-------|------------|-------|-----|-----------------|-------------------|--------------------------------|--------|
| | Oval flange | | DIN flange | | D1 | | | | D2 |
| | B1 | B1+B2 | B1 | B1+B2 | | | | | |
| LCRI, LCRN 2/2 | 239 | 452 | 264 | 477 | 143 | 106 | 19.0 | 29.0 | 0.1030 |
| LCRI, LCRN 2/3 | 257 | 470 | 282 | 495 | 143 | 106 | 19.0 | 29.0 | 0.1030 |
| LCRI, LCRN 2/4 | 275 | 488 | 300 | 513 | 143 | 106 | 19.0 | 29.0 | 0.1030 |
| LCRI, LCRN 2/5 | 293 | 506 | 318 | 531 | 143 | 106 | 20.0 | 30.0 | 0.1030 |
| LCRI, LCRN 2/6 | 311 | 575 | 336 | 600 | 160 | 113 | 22.0 | 36.0 | 0.1428 |
| LCRI, LCRN 2/7 | 329 | 593 | 354 | 618 | 160 | 113 | 24.0 | 38.0 | 0.1428 |
| LCRI, LCRN 2/9 | 371 | 635 | 396 | 660 | 160 | 113 | 26.0 | 40.0 | 0.1428 |
| LCRI, LCRN 2/11 | 407 | 671 | 432 | 696 | 160 | 113 | 27.0 | 41.0 | 0.1428 |
| LCRI, LCRN 2/13 | 443 | 721 | 468 | 746 | 165 | 130 | 29.0 | 43.0 | 0.1428 |
| LCRI, LCRN 2/15 | 479 | 757 | 504 | 782 | 165 | 130 | 35.0 | 49.0 | 0.1428 |
| LCRI, LCRN 2/18 | 549 | 827 | 574 | 852 | 165 | 130 | 37.0 | 55.0 | 0.1825 |
| LCRI, LCRN 2/22 | 621 | 899 | 646 | 924 | 165 | 130 | 39.0 | 57.0 | 0.1825 |
| LCRI, LCRN 2/26 | 693 | 997 | 718 | 1022 | 194 | 140 | 46.0 | 72.0 | 0.2650 |

Performance Curves

Vertical multistage centrifugal pumps

LCRI, LCRN 2

