

Quality for your borewell :

These motors are heavy duty, rewindable, stainless steel water filled submersible motors which are designed and sized for installation in 6" diameter or larger water wells. They are of robust construction and are furnished with heavy duty radial & thrust bearings to take the extra radial & thrust load when used with high head pump.

Product Features :

- 6" Water filled heavy duty stainless steel submersible motor.
- Easily rewindable (wet wound) induction motor with PE insulated windings.
- Completely stainless steel AISI 304 construction.
- Water lubricated heavy duty radial and axial thrust bearings.
- Counter thrust bearing.
- Motors are pre-filled with clean water + Glycol mixture.
- Shaft extension made of stainless steel AISI 316.
- High efficiency electrical design (lower operating cost).
- Tropicalized design (lower winding temperature).
- 6" NEMA coupling flange.
- Pressure compensation diaphragm.

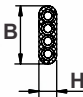
Specifications :

- Ratings: Three phase - 4 to 45 kW
- Supply voltages (Tolerance +10% / -15%):
50 Hz, 3 phase, 380 V, 400 V, 415 V
60 Hz, 3 phase, 230 V, 380 V, 460 V
- Degree of protection: IP 68
- Continuous duty
- Ambient temperature: 45°C
- Rotation: Three phase - CCW and CW
- Maximum nos. of starts/hour:
4 to 22 kW - 20
26 to 45 kW - 15
- Water pH: 6,5 - 8
- Minimum cooling flow along the motor:
4 to 15 kW - 15 cm/sec
18,5 to 45 kW - 30 cm/sec
- Motor protection: Select thermal overload protection with trip time < 10 sec. at 5 x I_n
- Maximum submerged depth: 250 metres
- Mounting: vertical / horizontal (up to 30 kW).

On Request :

- Mechanical shaft seal Sic/Sic.
- Built in PT 100 temperature sensor.
- Special voltages.
- Double cable for Star - Delta operation.
- PE2/PA winding insulation.

Cable Data :

HP	Type of start	Cable x Leads x Size (mm ²)	Length [m]	H x B [mm]	
5.5 to 60.0	DOL	1 x 4 x 6	3.5	7.9 x 24.3	



Submersible Rewindable Motor

6" WF Premium Stainless Steel

Motors that are top class in Performance & Reliability

Cable

Cable safe for drinking water.

Earth cable

Outside earth cable provided.

Sensor

Temperature protection by means of PT 100 sensor (Optional).

Windings

Rewindable motor construction allows for low – cost motor repair that can be done locally.

Efficiency

High efficiency provides energy saving.

Thrust

The thrust bearing is larger than the competition and is rated to take much more thrust load than what would be subjected by the pump.

Shaft Extension

Stainless steel splined shaft extension to NEMA

Shaft seal

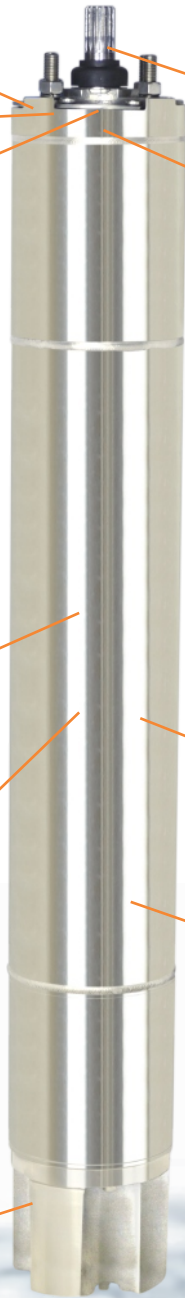
Mechanical shaft seal is standard.

Easy Maintenance

Designed for easy disassembly & repair

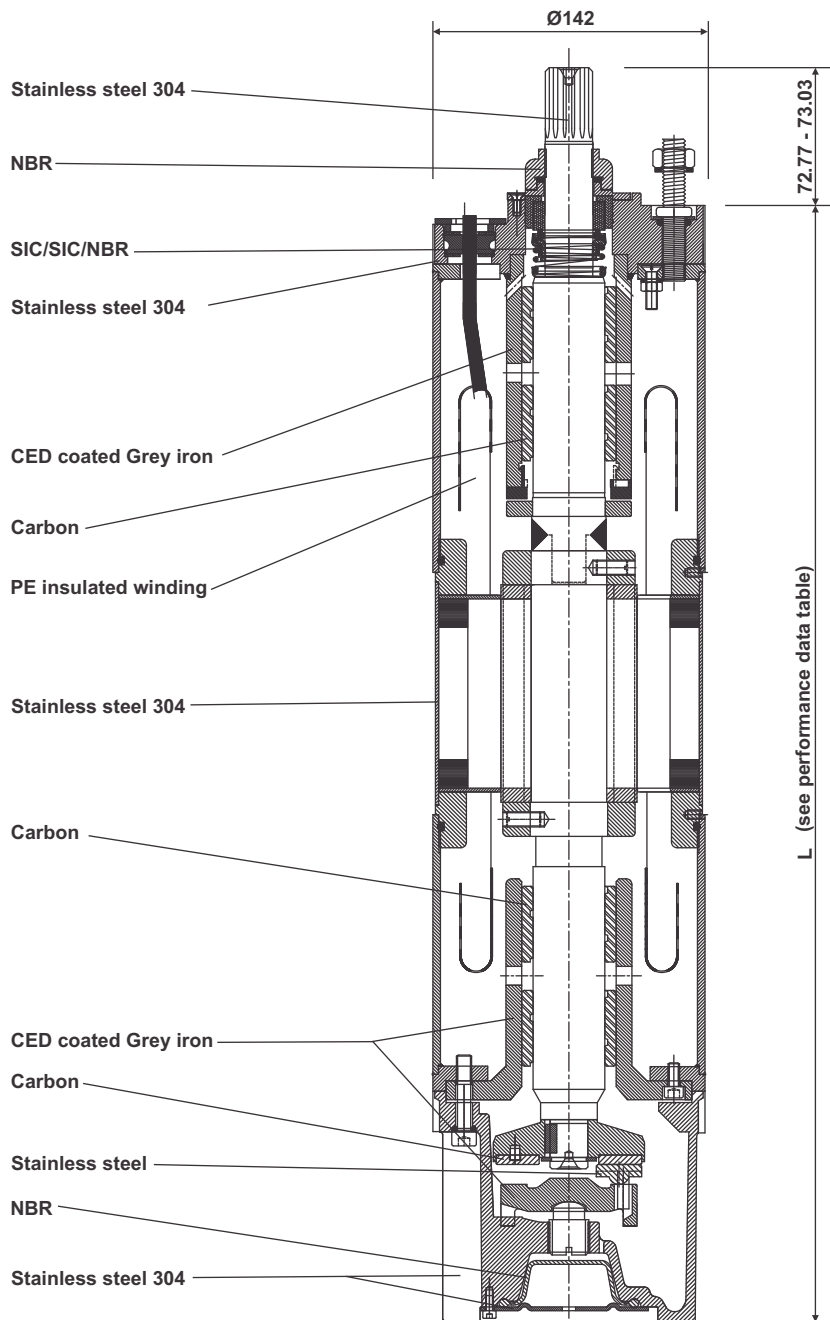
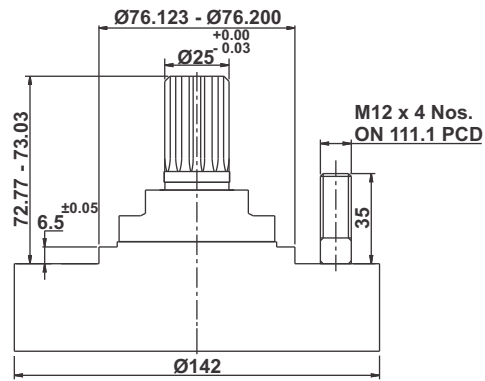
Contamination

Water filled motor design prevents water contamination.



Submersible Rewindable Motor

6" WF Premium Stainless Steel



Shaft :

Spline shaft: 15 teeth, 16/32 pitch, module 1.5875, 30° pressure angle, coupling tolerance 5 as per ANSI B.92.1, confirming with NEMA 6".

Submersible Rewindable Motor

6" WF Premium Stainless Steel

6" Submersible Rewindable Motor Performance Data 50 Hz

Performance data

Motor type	Pn		Ka [N]	Un [V]	In	Ist/In	n [min ⁻¹]	η [%]			COS φ			Tn [Nm]	L [mm]	Gross weight [kg]	Gross volume [m ³]
	kW	HP						50%	75%	100%	50%	75%	100%				
L6505-KPSS	4.00	5.50	27500	380	9.80	4.10	2900	70.3	74.5	76.0	0.64	0.74	0.82	13.18	635	48.7	0.0250
				400	9.30	4.00	2920	71.3	75.2	76.5	0.62	0.73	0.81	13.08			
				415	9.40	4.10	2920	71.6	74.9	76.2	0.59	0.70	0.78	13.08			
L6507-KPSS	5.50	7.50	27500	380	13.0	4.10	2865	72.3	76.2	77.8	0.65	0.77	0.84	18.34	665	52.4	0.0250
				400	12.6	4.00	2880	73.3	76.7	78.0	0.63	0.75	0.83	18.25			
				415	12.7	4.10	2895	73.8	77.2	78.5	0.61	0.73	0.81	18.15			
L6510-KPSS	7.50	10.00	27500	380	17.3	5.20	2870	73.8	76.9	78.5	0.66	0.77	0.84	24.97	715	58.4	0.0250
				400	16.8	5.00	2880	74.8	77.7	79.0	0.64	0.75	0.83	24.88			
				415	16.5	4.90	2890	75.3	78.2	79.5	0.61	0.73	0.82	24.80			
L6512-KPSS	9.30	12.50	27500	380	21.0	5.20	2855	75.0	78.7	80.5	0.66	0.76	0.84	31.12	755	61.7	0.0310
				400	20.5	5.10	2870	76.8	79.7	81.0	0.64	0.75	0.82	30.96			
				415	20.2	5.00	2885	77.0	79.9	81.2	0.62	0.73	0.80	30.80			
L6515-KPSS	11.00	15.00	27500	380	24.5	5.20	2860	76.3	79.2	81.2	0.67	0.77	0.85	36.75	790	67.5	0.0310
				400	23.8	5.10	2880	77.3	80.7	82.0	0.64	0.76	0.83	36.49			
				415	23.6	5.30	2890	77.8	80.9	82.2	0.62	0.74	0.81	36.37			
L6517-KPSS	13.00	17.50	27500	380	28.9	5.00	2870	76.8	79.7	81.5	0.66	0.77	0.84	43.28	820	68.0	0.0310
				400	28.2	5.10	2890	77.8	80.7	82.0	0.63	0.76	0.82	42.98			
				415	28.1	5.20	2890	78.3	81.2	82.5	0.61	0.73	0.79	42.98			
L6520-KPSS	15.00	20.00	27500	380	32.4	5.20	2870	77.8	80.9	82.8	0.68	0.79	0.85	49.93	890	77.8	0.0310
				400	31.4	5.10	2890	78.8	81.7	83.0	0.66	0.77	0.84	49.60			
				415	31.2	5.30	2890	79.3	82.2	83.5	0.62	0.74	0.81	49.60			
L6525-KPSS	18.50	25.00	27500	380	39.9	5.10	2860	78.2	81.3	82.8	0.69	0.79	0.85	61.80	950	81.8	0.0310
				400	39.0	5.20	2880	78.7	81.8	83.0	0.65	0.77	0.83	61.37			
				415	39.3	5.25	2890	79.2	82.3	83.6	0.63	0.74	0.81	61.16			
L6530-KPSS	22.00	30.00	27500	380	46.5	5.10	2870	78.3	81.6	83.6	0.70	0.80	0.86	73.24	1010	98.4	0.1240
				400	44.6	5.20	2890	79.2	82.8	84.0	0.66	0.77	0.85	72.73			
				415	45.2	5.15	2900	79.7	83.0	84.3	0.62	0.75	0.83	72.48			
L6535-KPSS	26.00	35.00	27500	380	56.2	5.18	2870	78.7	81.8	83.6	0.70	0.79	0.86	86.56	1090	111.7	0.1330
				400	55.4	5.20	2890	79.3	82.8	84.0	0.65	0.77	0.84	85.96			
				415	56.0	5.15	2900	79.9	83.1	84.3	0.62	0.75	0.82	85.66			
L6540-KPSS	30.00	40.00	27500	380	63.2	5.22	2890	78.9	82.8	84.5	0.71	0.80	0.87	99.18	1140	120.0	0.1330
				400	62.4	5.30	2900	80.1	83.8	85.0	0.65	0.79	0.86	98.84			
				415	63.8	5.32	2900	81.2	84.3	85.6	0.63	0.75	0.83	98.84			
L6550-KPSS	37.00	50.00	27500	380	78.5	5.35	2890	79.7	82.8	84.2	0.71	0.80	0.87	123.18	1270	131.0	0.1400
				400	77.4	5.30	2900	80.2	83.8	85.0	0.66	0.79	0.86	121.90			
				415	79.0	5.32	2900	81.2	84.0	85.2	0.63	0.75	0.84	121.90			
L6560-KPSS	45.00	60.00	27500	380	93.0	5.36	2890	79.7	82.8	84.5	0.71	0.80	0.87	148.77	1370	142.7	0.1490
				400	88.3	5.31	2900	80.2	83.8	85.5	0.66	0.79	0.86	148.26			
				415	87.1	5.33	2900	81.2	84.0	85.6	0.63	0.75	0.84	148.26			

Pn: Rated output
 Ka: Thrust load
 Un: Rated voltage
 In: Rated current
 Ist/In: Locked rotor current/Rated amperage
 n: Rated speed
 η: Efficiency
 cos φ: Power factor
 Tn: Rated torque
 L: Motor length

Submersible Rewindable Motor

6" WF Premium Stainless Steel

6" Submersible Rewindable Motor Performance Data 60 Hz

Performance data

Motor type	Pn		Ka [N]	Un [V]	In	Ist/In	n [min ⁻¹]	η [%]			COS φ			Tn [Nm]	L [mm]	Gross weight [kg]	Gross volume [m ³]
	kW	HP						50%	75%	100%	50%	75%	100%				
L6605-KPSS	4.00	5.50	27500	230	18.5	5.30	3480	69.8	75.8	77.0	0.63	0.74	0.81	10.98	620	47.2	0.0250
				380	11.6	4.56	3480	70.8	76.3	77.0	0.64	0.74	0.78	10.98			
				460	9.3	4.63	3500	70.3	76.8	78.0	0.66	0.75	0.80	10.92			
L6607-KPSS	5.50	7.50	27500	230	25.8	5.30	3480	74.8	77.8	79.0	0.62	0.74	0.82	15.10	635	48.7	0.0250
				380	15.4	4.90	3480	75.8	78.3	79.0	0.64	0.75	0.79	15.10			
				460	12.6	4.72	3500	74.8	77.8	79.0	0.65	0.75	0.82	15.00			
L6610-KPSS	7.50	10.00	27500	230	32.6	5.40	3480	75.8	78.8	80.0	0.64	0.76	0.83	20.59	665	52.4	0.0250
				380	20.5	5.30	3480	76.3	79.3	80.0	0.66	0.77	0.80	20.59			
				460	16.5	5.06	3500	75.8	78.8	80.0	0.66	0.76	0.82	20.47			
L6612-KPSS	9.30	12.50	27500	230	41.8	5.55	3480	75.8	79.8	80.0	0.64	0.76	0.84	25.53	715	58.4	0.0250
				380	25.4	4.90	3480	76.8	79.8	80.0	0.66	0.77	0.80	25.53			
				460	20.1	4.89	3500	77.3	80.3	81.0	0.66	0.76	0.82	25.39			
L6615-KPSS	11.00	15.00	27500	230	46.7	5.60	3480	77.8	80.3	81.0	0.64	0.77	0.84	30.20	755	61.7	0.0310
				380	29.3	5.25	3480	78.3	80.8	81.0	0.66	0.77	0.81	30.20			
				460	23.3	5.26	3500	77.8	81.3	82.0	0.67	0.77	0.83	30.00			
L6617-KPSS	13.00	17.50	27500	230	55.6	5.65	3480	77.3	80.8	82.0	0.65	0.76	0.84	35.69	790	67.5	0.0310
				380	34.2	5.36	3480	78.8	81.3	82.0	0.66	0.77	0.81	35.69			
				460	27.6	5.36	3500	77.8	80.8	82.0	0.67	0.77	0.83	35.49			
L6620-KPSS	15.00	20.00	27500	230	61.4	5.65	3480	78.3	82.0	83.0	0.64	0.76	0.85	41.18	820	68.0	0.0310
				380	39.0	5.37	3480	78.8	82.0	82.0	0.67	0.78	0.82	41.18			
				460	31.1	5.38	3500	78.3	81.8	83.0	0.67	0.77	0.84	40.95			
L6625-KPSS	18.50	25.00	27500	230	79.4	5.66	3480	78.1	82.9	84.0	0.64	0.77	0.85	50.79	890	77.8	0.0310
				380	47.8	5.70	3480	78.7	83.1	83.0	0.67	0.78	0.82	50.79			
				460	37.8	5.69	3500	78.3	82.9	84.0	0.68	0.78	0.84	50.50			
L6630-KPSS	22.00	30.00	27500	230	92.7	5.60	3480	79.1	83.9	85.0	0.65	0.76	0.85	60.40	950	81.8	0.0310
				380	55.8	6.23	3480	79.5	84.1	83.0	0.67	0.78	0.83	60.40			
				460	45.0	5.80	3500	78.9	82.9	84.0	0.68	0.78	0.84	60.00			
L6635-KPSS	26.00	35.00	27500	230	104.7	5.70	3480	80.1	83.9	85.0	0.66	0.79	0.86	71.39	1010	98.4	0.1230
				380	65.9	6.22	3480	80.4	84.1	83.0	0.69	0.79	0.83	71.39			
				460	52.6	6.22	3500	79.9	83.9	85.0	0.70	0.80	0.84	70.98			
L6640-KPSS	30.00	40.00	27500	230	125.4	5.75	3480	79.9	83.7	85.0	0.67	0.79	0.86	82.37	1090	111.7	0.1330
				380	74.3	6.18	3480	80.5	83.9	84.0	0.69	0.80	0.84	82.37			
				460	60.0	6.19	3500	80.1	83.9	85.0	0.70	0.80	0.85	81.90			
L6650-KPSS	37.00	50.00	27500	230	150.4	5.75	3480	80.1	83.9	85.0	0.66	0.79	0.86	101.60	1140	120.0	0.1330
				380	91.6	5.61	3480	80.3	84.1	84.0	0.68	0.80	0.84	101.60			
				460	74.0	5.62	3500	79.9	83.7	85.0	0.69	0.79	0.85	101.00			
L6660-KPSS	45.00	60.00	27500	230	177.7	5.77	3480	80.1	83.9	85.0	0.65	0.78	0.86	123.55	1270	131.0	0.1400
				380	107.6	5.63	3480	80.3	84.1	86.0	0.67	0.79	0.86	123.55			
				460	89.9	5.64	3500	79.9	83.7	85.0	0.68	0.78	0.85	122.84			

Pn: Rated output
 Ka: Thrust load
 Un: Rated voltage
 In: Rated current
 Ist/In: Locked rotor current/Rated amperage
 n: Rated speed
 η: Efficiency
 cos φ: Power factor
 Tn: Rated torque
 L: Motor length